



**The Highest Quality,
Pioneer Manufacturing
and Installation are
Spirit of
SOVISY INDIA PVT. LTD.**

WORLD'S FIRST GRP SKIN INSULATED TANKS

CERTIFICATION



Fire and Security
Association of India



**50+ YEARS
LIFE SPAN**



**NO ALGAE
FORMATION**

**ANTI
CORROSION**



**MODULAR
DESIGN**

Toll Free 1800-891-2050

info@sovisy.in

www.sovisy.com

OUR MAJOR CLIENTS

GOVERNMENT AND PUBLIC SECTOR ORGANISER



AIRPORT



CORPORATE CLIENTS



REALTY SECTOR



HOSPITALITY AND HEALTH CARE



AUTOMOBILE INDUSTRIES CLIENTS



3000+
SMC TANKS
INSTALLED
LAST YEAR



What is
SOVISY - SMC
water tank



Customisable



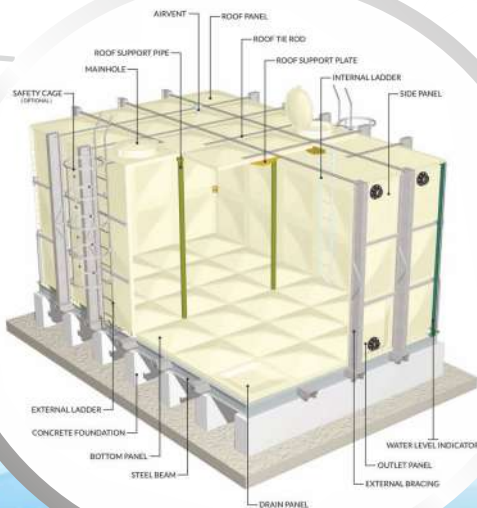
Life Time Durable



Eco-Friendly

- Sheet Molding Compound (SMC) is a mixture of unsaturated polyster resin with impregnating augmentation material, filling material and glass fiber.
- The SMC water tank body (Floor, wall and ceiling) is made of bolting type square SMC panels, which are molded under high heat & pressure.
- SOVISY SMC water tanks guarantee sanitation, excellent durability, absolute water tightness, versatile capacity design and easy installation.

100% customizable
To Fit Any
Capacity | To Any
Location



THE
UNBEATABLE
ADVANTAGES

- Easy to handle/ Ship.💧
- Easy to assemble at site in any size.💧
- Easy to dismantle and re-locate.💧
- Easy to increase and decrease the size.💧
- Maintain the quality of stored water for longer duration.💧
- Lightweight, extremely strong and durable panels.💧
- Easy fixing for plumbers/technicians using conventional tools.💧
- 100% weather resistance, water moisture & rot-proof.💧
- 100% safe for drinking water storage.💧
- Ideal for storing water from sub-zero to extremely hot climates.💧
- Proven life, over 50 years even in the worst climates of the world.💧
- Water storage and transportation in the dry lands.💧
- Ideal for chemical, pharmaceutical and corrosive factory areas.💧

STRENGTH & DURABILITY

SOVISY SMC/GRP Panel Tanks

- Hydrostatic Pressure – Water pressure reinforced 4 times standard transformation rate in filled with: Less than 1% form the water tank height.
- Wind Force – Less than 60 m/sec.
- Factor of safty 6 times as prescribed by IS 14399 Code
- Earthquake Force – Stable and safe till magnitude5.0 (>5.0, it needs additional reinforcement).
- Snow load – 60 Kg/m², Snow fall less than 30cm.
- Illumination Rate – Less than 0.1%.
- Out-fit Force –No leakage under condition of vertical 100 Kg after installation of 100 A fitting with 70 mm span support.
- Water Quality – Tap water, well water chlorine below 50 mg/l. Seawater: application Externally can Sustain Reinforced water tank (max 4 m height).
- PH Rang will be range- 4 to 8.



Supplying and placing on position of ISI Marked SOVISY SMC panel tanks for water storage as confirming with IS 14399: 1996 and material to be confirming as per IS 4249:1967 for fire retardant, required capacity of suitable size including fixing and assembling / erecting the tank complete as per direction of engineer in-charge. The tanks to be leak proof after installation and having following specifications. Standard Non Insulated SMC Panels Hot pressed moulded UV stabilised made from Sheet Moulding Compounds (SMC) composing of glass fiber and formulation of selected resin from MENZOLIT, Germany.

SMC PANELS : Made by Hot Pressed Process Moulded

Bottom Panel	SMC Panel – 1 x 1 mtr. Convex Shape
Drain Panel & Outlet Panels	SMC Panel – 1 x 1 mtr. Special design for complete drain
Side Panel	SMC Panel – 1 x 2 mtr, 1 x 1 mtr, 1 x 0.5 mtr.
Ceiling Panel	SMC Panel – 1 x 1 mtr textured type for anti skidding design
Manhole	SMC Panel – 1 x 1 mtr with locable lid dia 700mm

SPECIAL ACCESSORIES

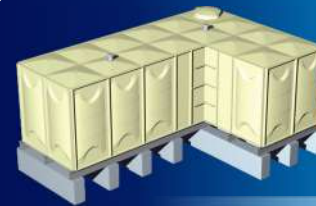
Corner Frame	HDG Steel Vertical Corner Angle
Sealing Tape – Non Toxic	3mm thick with high level of resistance to ageing and superior recovery from compression (Make: Norseal by Saint Gobain, USA)
Steel Bolts for Panel Joints	HDG Steel Nut-Bolt – 8.8 Grade M12 x 40mm
Air Vent – Mosquito proof	Mosquito proof mesh Air Vent 100 dia.
External Ladder – 1 each	Galvanised with Fixing arrangement outside
Roof Support Pipe	FRP Internal Ceiling Panel supports
Inlet/Outlet/Overflow/Drain	G.I. Flanges with 9" Long Nipple 50NB each
External Reinforcement	ISI marked C channel at every 1-meter except in the corner of steel with anti-corrosive paint and it is tie with top external tie rods. (If tank height is more than 1 meter)
Internal Roof Supports	FRP Hollow Square section 5mm thick
Airvent	Airvent – Mosquito proof mesh insect proof – 100 mm
Water Level Indicator	Aluminum body water level indicator with clear tube type and brass nozzle (For Tank height more than 1 Meter)
Ladders	Exteranl ladder with wall mounting arrangement. Internal ladder FRP (if tank height is nore than 1 meter)
Connection fixing	Inlet, Outlet, Overflow & Drain – 50 NB (as per Table D - BS 10) G.I. Flange type with 9" long thread end Nipple

Technical Specifications
"SOVISY" SMC/ GRP
Non-Insulated PANEL TANK

INSULATED SMC PANEL TANK

TECHNICAL CHARACTERISTICS

DESCRIPTION	DATA
Panel Colour	Light Ivory (RAL 1015)
Panel Strength	Hydrostatic Pressure x 4 to x 6 (Safety Factor) on maximum anticipated load.
Wind Velocity	60 m/sec
Roof Load	120 Kgf/m ²
Water Temperature	65°C (Max)
Specific Gravity	1.75
Glass Content	33%
Tensile Strength	84 MPa
Bending Strength	171 Mpa
Impact Strength	80 Kgf.cm / cm ²
Compressive Strength	160 Mpa
Shear Strength	100 Mpa
Barcol Hardness	64
Flame Spread (FSI)	60
Thermal Conductivity	0.036 W/m ² .K
Coefficient of Overall Heat Transmission (Thermal Conductance)	0.97 W/m ² .K
Thermal Expansion	1.66 x 10 ⁻⁵ /°C
Water Absorption	Less than 0.1%
Light Transmission	0.00%
Fire Rating Class	B / 2



L-Shape



C-Shape



Irregular Shape



Square Shape

Bespoke Design of Sovisy SMC Panel Tanks

At Sovisy, we specialize in the bespoke design of SMC panel tanks, tailored to meet your specific needs and make the most out of limited or awkwardly shaped spaces. Our expert team can create tanks in a variety of configurations, allowing you to choose from a range of shapes that best fit your requirements. Whether you need a traditional square or rectangular tank, or more unique arrangements such as L, C, U, T shapes, or even more complex geometries, we have you covered.

SOVISOY at PRESTIGIOUS Locations

RASHTRAPATI BHAWAN

SUPREME COURT OF INDIA

7 AIRPORTS IN INDIA

INDIAN ARMY CAMP

HOUSE OF GOVERNOR, ASSAM

MUMBAI MUNICIPAL CORPORATION

TAJ SATS, KOLKATA

We Supply Across the **WORLD**

SOVISY has completed many prestigious projects for the Private, Commercial, Industrial and government sectors in the South Africa & Asian territory which include Airports, Hospitals, Laboratories, Schools, Palaces, Hotels, High Rise Buildings, Networks and Residential Connections



Empowering Lives, Sustaining Futures

SOVISY's Legacy in Innovative Water Storage Solutions

SOVISY entered the GRP/SMC Panel Tank industry with a vision to deliver advanced and sustainable water storage solutions. With global certifications and years of expertise, we design modular, flexible, and high-quality tanks that ensure long-term durability, water purity, and zero maintenance. Unlike plastic, concrete, or steel, our tanks eliminate common storage challenges and are globally recognized as a preferred choice for conserving water. Manufactured through the SMC Hot Press Moulding process, our tanks range from 1 KL to 2500 KL+, catering to both domestic and industrial needs. As an ISO 9001-certified company, SOVISY continues to focus on innovation and hygienic water storage technology for a sustainable future.

Our Mission

Research and Development of most modern global Technology is the keynote of our mission. We are sensitive to the needs of our customers. We devote energy with all honesty and integrity for everlasting solution to their needs. We take almost care of our suppliers, employees, technologists too.

Our Mission

The Vedas, humanity's oldest script, highlight the significance of preserving water in its purest form. Clean water storage is vital for society, industry, and life itself. In the 21st century, as nations grapple with the challenge of securing clean water, Sovisy India Private Limited aligns with modern science, innovating storage solutions.

Nilanjana : 9382861855 / Sutapa : 7863991096

11-15 D.K. INDUSTRIAL ESTATE II, BLOCK NO 70, CHHATRAL, DIST- GANDHINAGAR, GUJARAT- 382729